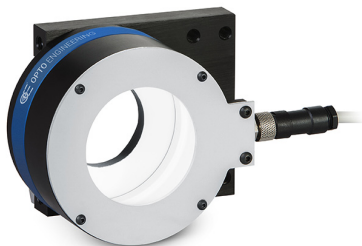


## Diffusive strobed dome illuminator - small size medium power white



### SPECIFICATIONS

#### Lighting specifications

Illumination area diameter	(mm)	40
Optimal working distance	(mm)	5-50
Number of LEDs		15
Light color, Peak wavelength		white, > 6000 K
Spectral FWHM	(nm)	-
Illuminance <sup>1</sup>	(klux)	175

#### Electrical specifications

Power supply mode		Strobe only, constant current driving
Peak power consumption	(W)	n.a.
Min pulse current	(A)	3.5
Max pulse current	(A)	7.5
Max pulse duration <sup>2</sup>	(ms)	1
Max duty cycle	(%)	1.5
Estimated MTBF <sup>3</sup>	(hours)	> 50000
Connector		M8

Included cable CBLT003

<sup>1</sup> Measured at maximum current and maximum working distance

<sup>2</sup> At 25°C. At max pulse width (1ms), max pulse frequency = 15 Hz

<sup>3</sup> At 25°C

### KEY ADVANTAGES

#### Ultra high-power light output and strobe mode only operation

For the inspection of fast moving object and an extended LED lifetime.

#### Rugged industrial design with built-in industrial connector

For easy integration into any machine vision system.

#### Wide selection

Available in three sizes, three colors and two power intensities.

#### Compatible LTDV strobe controllers available

For easy and appropriate power, control and synchronization of the illuminator.

**LTD series** are high power diffuse LED strobe dome illuminators designed to provide non-directional diffused light and to effectively eliminate glare and shadows.

#### Mechanical specifications

Aperture Diameter	(mm)	38
Length	(mm)	107.0
Width	(mm)	84.0
Height	(mm)	53.0
Mass	(g)	500
Clamping system		4x M6 threaded holes

#### Environment

Operating temperature	(°C)	0-40
Storage temperature	(°C)	0-50
Operating relative humidity	(%)	20-85, non condensing
Installation		Indoor use only

#### Eye safety

Risk group (CEI EN 62471:2010)	Exempt
--------------------------------	--------

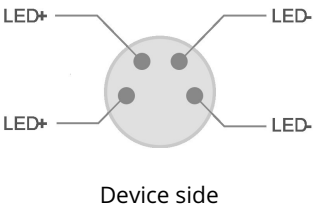
### COMPATIBLE PRODUCTS

Full list of compatible products available [here](#).



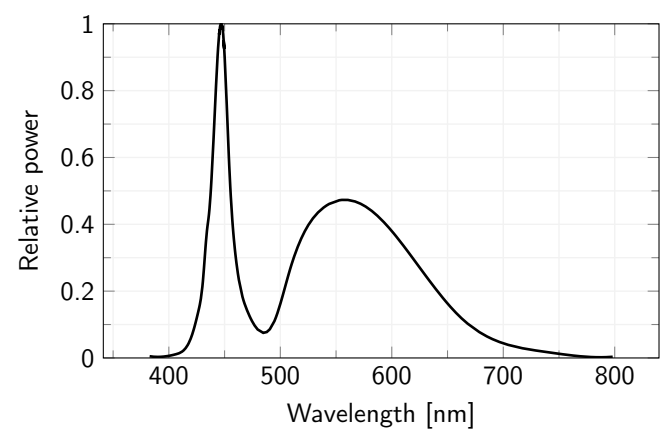
A wide selection of innovative machine vision components.

CONNECTOR PINOUT

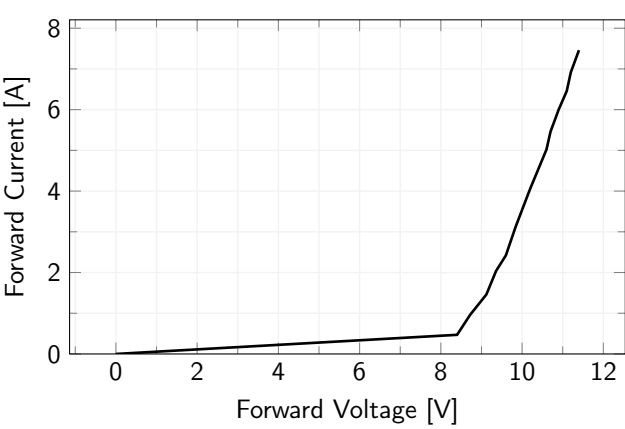


Function	Cable color
LED +	Brown
LED +	White
LED -	Blue
LED -	Black

LED color spectrum



Forward Current Characteristics



All product specifications and data are subject to change without notice to improve reliability, functionality, design or other. Photos and pictures are for illustration purposes only. Data are reported by design, actual lens performance may vary due to manufacturing tolerances.